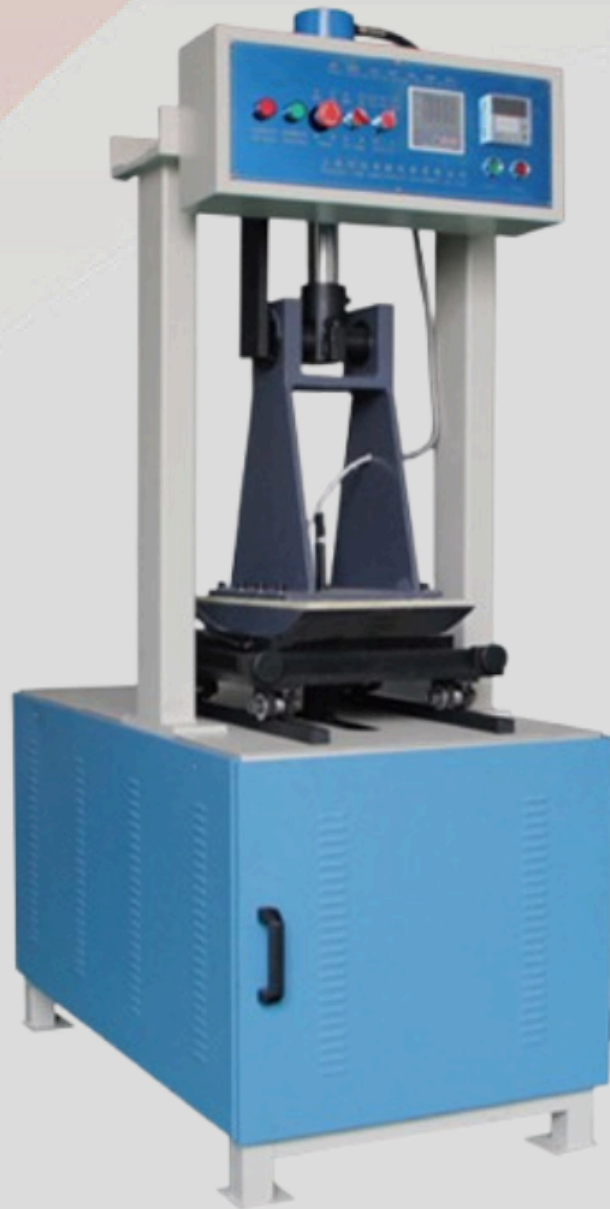


# geolometer

ROCK SOLIDLY RELIABLE



**GL-AT 104**  
**Hydraulic Car rut  
sample forming machine**

## PRODUCT APPLICATION

This machine is mostly used for crushing and creating asphalt mixes during rut testing, but it is also capable of producing wheeling methods for various physical and mechanical aspects of asphalt mixtures.

The JTJ052-2000 (T0703-1993) standard's requirements are fully met by the machine and the test procedure.

## Product Specifications

SPECIFICATIONS	GL-AT 104
Test mode specifications	300 × 300 × (30 to 100) mm
Test car stroke	300 mm
Height change of test mode	30 to 100 mm
Wheel pressure	0 to 20 kN (adjustable)
Wheel radius	500 mm
Wheel width	300 mm
Wheel rearing	20 ~ 200 °C (adjustable)
Crushing wheel pressure	300N/cm
Crushing wheel width	30 cm
Dimensions (l x w x h)	620×1100×1900 mm
Co-connection power	3 kW
Voltage	AC220V ± 10%, 50Hz